

# Sanitary Sewer Overflow Response For Property Managers

Madeline Cullison

Environmental Specialist

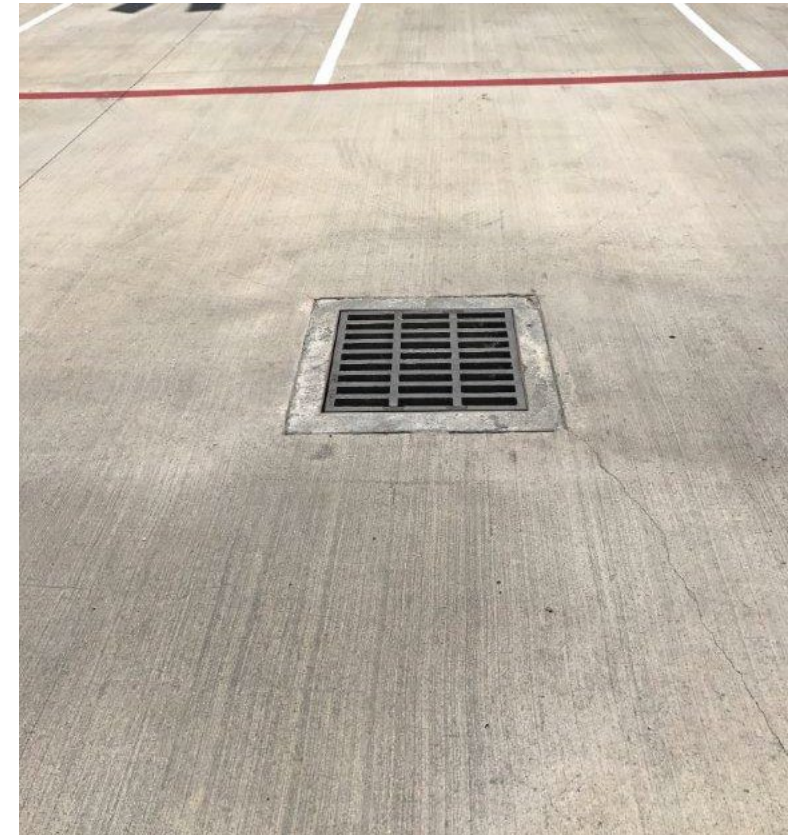
Environmental Management / Public Works

# Environmental Management

Who We Are

What We Do

# MS4 – Municipal Separate Storm Sewer System





# MS4 – Municipal Separate Storm Sewer System





# Sanitary Sewer Overflows (SSOs)



What are SSOs?



What causes SSOs?

# Stormwater Pollution Control Ordinance

## **Section 3.03   Specific Requirements for Land/Property Owners and Occupants**

- A. Sanitary sewer overflows shall be prevented. All sanitary sewer overflows shall be reported to the City of Arlington as soon as the owner, occupant, or person otherwise having control of the sanitary sewer becomes aware of the overflow and to the appropriate federal and state agencies within 24 hours. If a sanitary sewer overflow enters the MS4, the owner, occupant, or person otherwise having control of the sanitary sewer shall remove all sewage and sewage contaminated water from the MS4.

# Stormwater Pollution Control Ordinance

## **Section 3.03   Specific Requirements for Land/Property Owners and Occupants**

- A. Sanitary sewer overflows shall be prevented.

# SSOs Shall Be Prevented

- Education
  - Wipes, paper towels, diapers
  - Fats, oils, and greases
- Maintenance
  - Periodic hydro-jetting
  - Camera lines to check for blockages



# Stormwater Pollution Control Ordinance

## **Section 3.03   Specific Requirements for Land/Property Owners and Occupants**

A.

All sanitary sewer overflows shall be reported to the City of Arlington as soon as the owner, occupant, or person otherwise having control of the sanitary sewer becomes aware of the overflow and

# SSOs Shall Be Reported

- City of Arlington Action Center : 817-459-6777
- 24 Hour Emergency Service : 817-459-5900



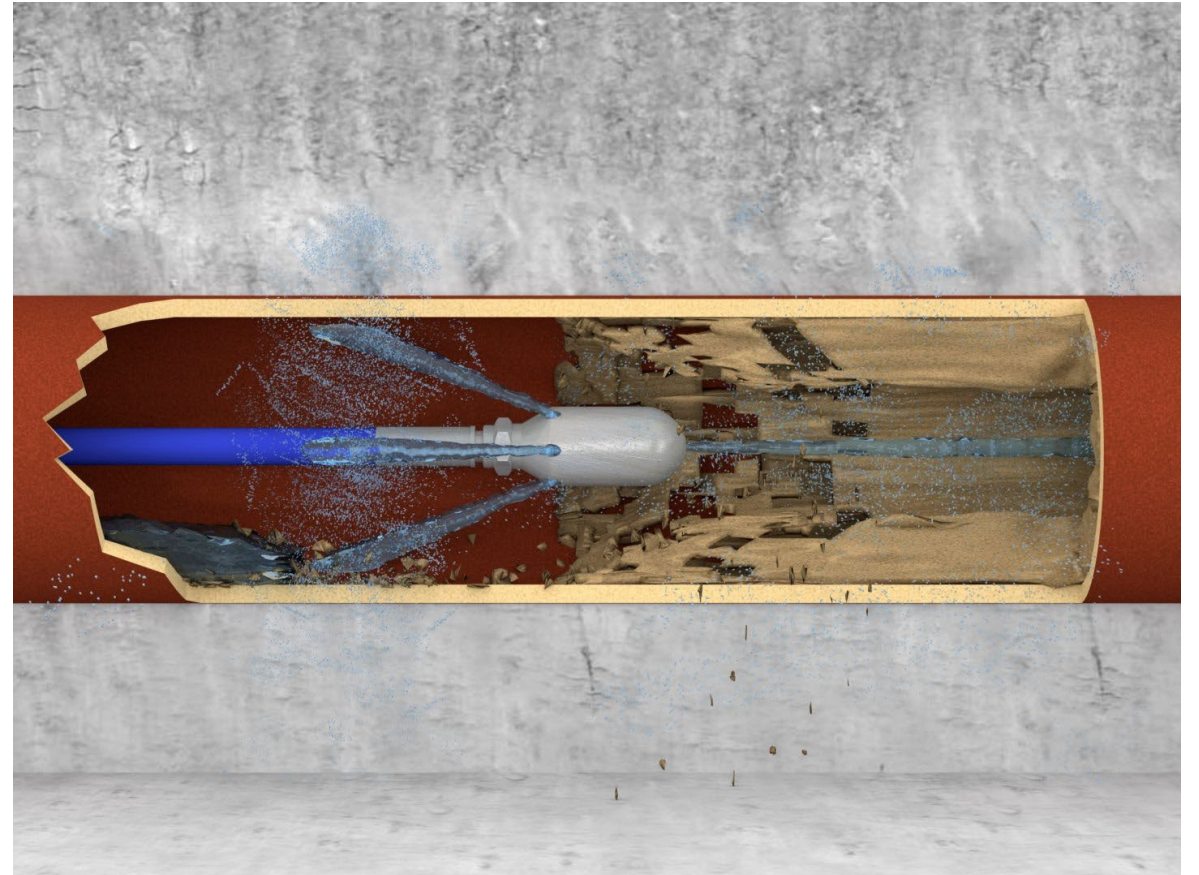
# Public vs Private – Not Always Simple





# Stop the Flow

- Call maintenance staff or plumber
- Clear any blockages
- Fix broken lines





# Stormwater Pollution Control Ordinance

## **Section 3.03   Specific Requirements for Land/Property Owners and Occupants**

A.

If a sanitary sewer overflow enters the MS4, the owner, occupant, or person otherwise having control of the sanitary sewer shall remove all sewage and sewage contaminated water from the MS4.

# Prevent Discharges to Storm Drainage

- Reduce water usage
- Turn off water
  - Case-by-case basis
- Berm the flow
  - Do not block storm drains
  - Avoid public health hazards



# Prevent Discharges to Storm Drainage



# Clean and Sanitize

- Collect and properly dispose of any solids
- Do not wash waste into storm drains
  - This will result in further enforcement
- Sanitize affected areas
  - Spritz a diluted bleach solution – 10%
  - Do not use bleach for natural areas
  - We do not recommend lime
- Remediate



# Removing Solids





# Remediation

- Call hazardous response / environmental cleanup contractor
- Vacuum out sewage and contaminated water
  - Contact Water Utilities if pumping into sanitary sewer
  - Vacuum truck to haul and dispose of waste

## Steps to Take :

1. Notify the City
2. Stop the Flow
3. Remediate any Impacts

# Resources

- [www.defendyourdrainsnorthtexas.org](http://www.defendyourdrainsnorthtexas.org)
- Bonus: [Pet Waste resources](#)





# Questions?

24 Hour Emergency Service : 817-459-5900

City of Arlington Action Center : 817-459-6777